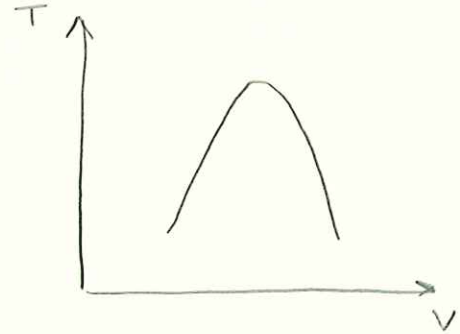
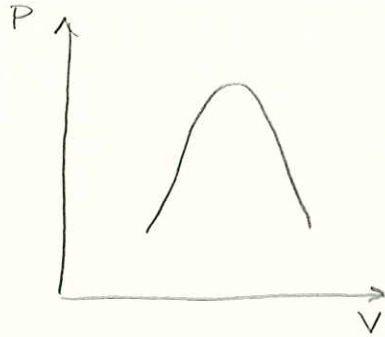
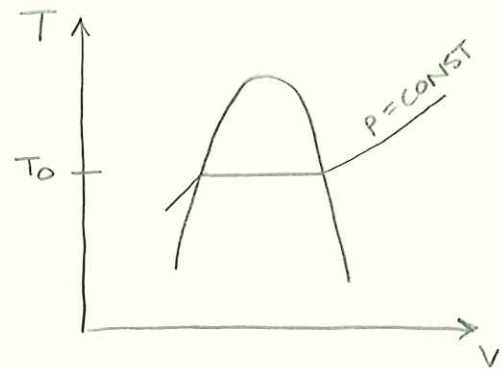
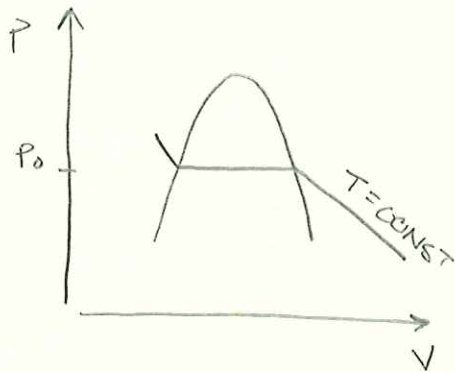


STEPS FOR CONSTRUCTING PV AND TV DIAGRAMS
GIVEN P_0 OR T_0

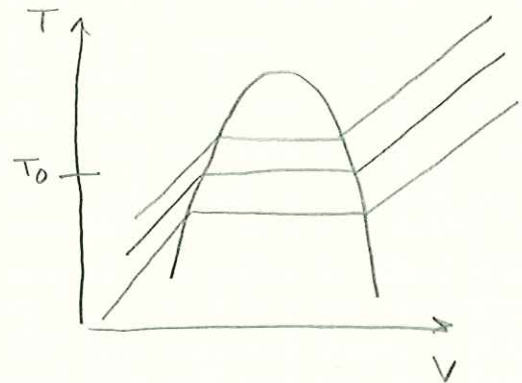
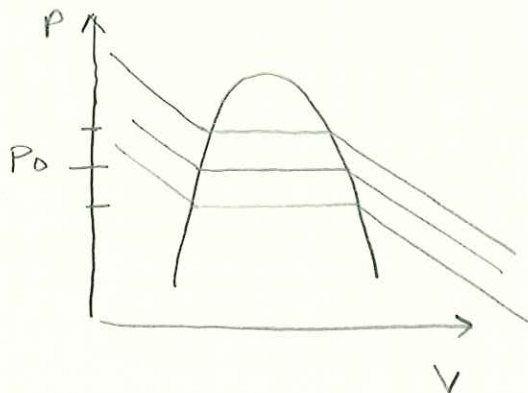
(1) DRAW AXIS AND DOME



(2) DRAW CONSTANT TEMP (ISOTHERM) OR CONSTANT PRESSURE CONTOURS (ISOBAR)



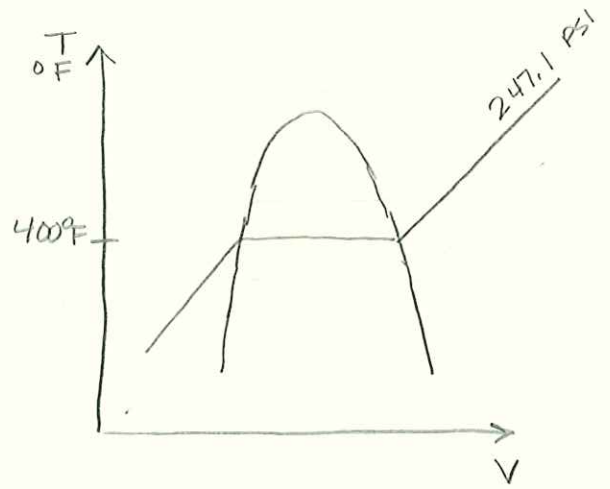
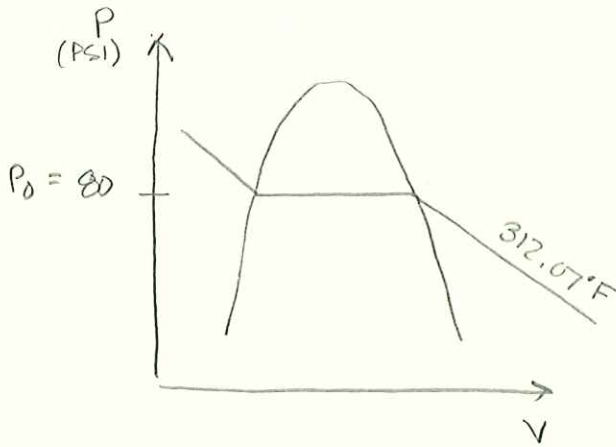
(3) NOW ADD A CONTOURS A LITTLE ABOVE AND BELOW THE TARGET PRESSURE (P_0) OR TEMPERATURE (T_0)



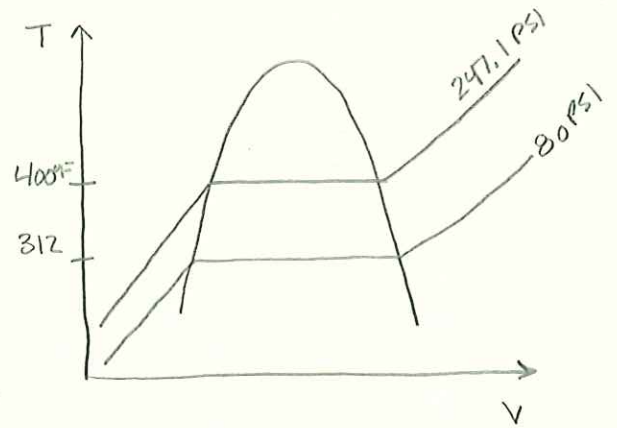
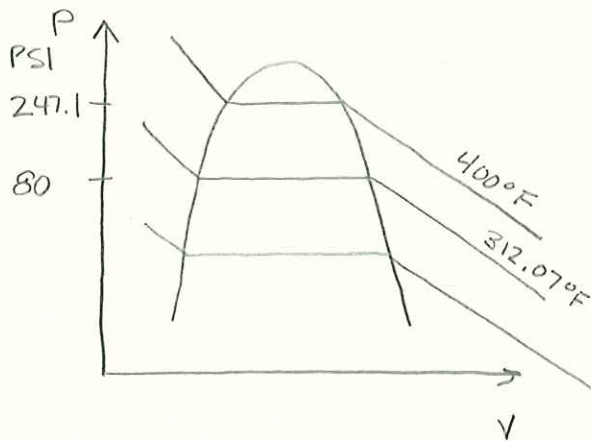
④ NOW ADD NUMBERS FOR EACH ISOBAR OR ISOTHERM FROM APPENDIX A-2 OR A-3

EXAMPLE, $P = 80$ PSI AND $T = 400^\circ\text{F}$

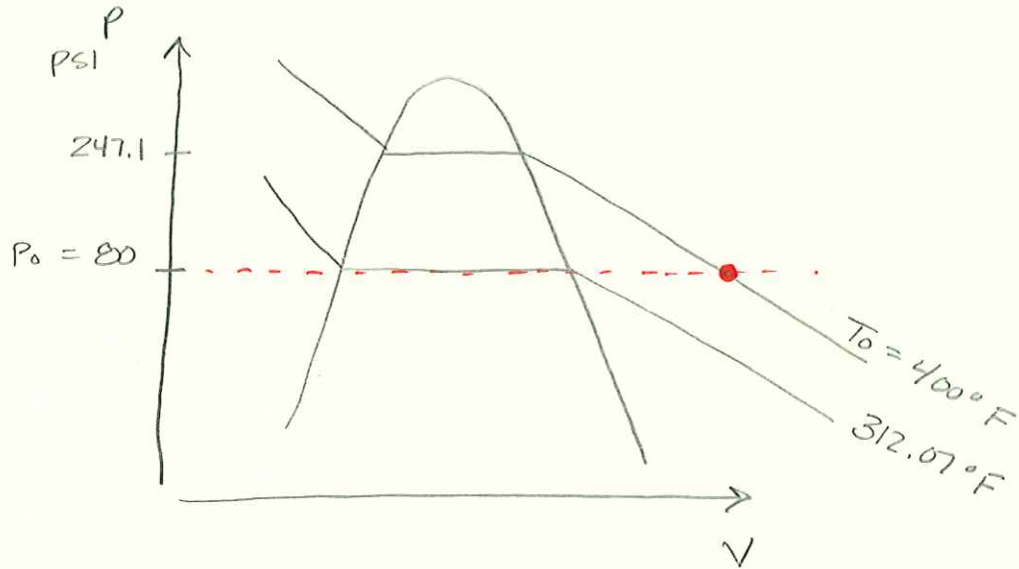
CAMPAD



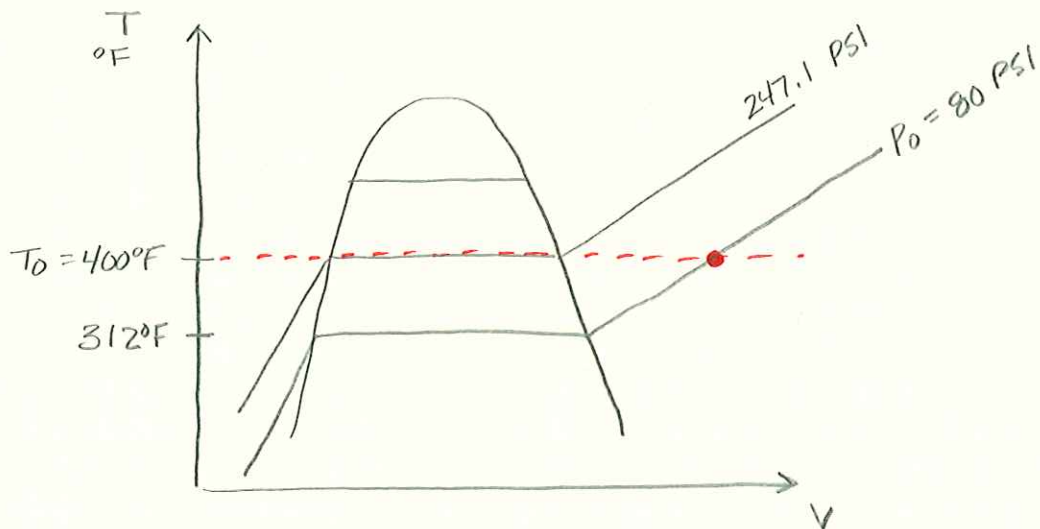
⑤ NOW ADD NUMBERS FOR THE EXTRA CONTOURS. CHOOSE THESE STRATEGICALLY.



⑥ DRAW A HORIZONTAL LINE CONNECTING P_0 AND WITH THE CONTOURS. THE POINT OCCURS AS THIS LINE CROSSES THE GIVEN TEMP (T_0)



DO THE SAME FOR TEMPERATURE



USING EITHER THE PV OR TV DIAGRAM WE CAN CONFIRM THAT THIS POINT IS IN THE VAPOR REGION.